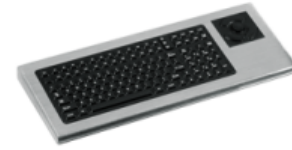


DT-2000

Keyboard with Integrated HulaPoint II™

The DT-2000 is constructed using a highly-rugged stainless steel case and industrial silicone rubber pad, ensuring NEMA 4X protection in extremely rugged applications. An integrated HulaPoint II™ pointing device offers additional usability. The DT-2000 provides users with a full 114-key industrial keyboard and HulaPoint II™ industrial pointing device. It has two rows of function keys that allow for single keystroke access to software shortcuts.



Technical Specifications

Certifications	NEMA 4X UL60950, FCC Part 15 Class B
Shock	3x11 ms pulses of 50g on each of 3 axes
Cable	LENGTH: 10 feet (3 meters) DESIGN: "Y" PS/2 or AT/serial Cable (providing separate keyboard and mouse connections), or Single-Cable USB
Key Switch	MATERIAL: Industrial silicone rubber LIFE: 10 million cycles TRAVEL: 0.055 in. (1.4 mm) ACTUATION FORCE: 6.35 oz +/- 1.06 oz (180g +/- 30g) FEEDBACK: Tactile with mechanical snap
Vibration	POWER SPECTRAL DENSITY: 0.04g/Hz FREQUENCY RANGE: 20Hz - 2 kHz DURATION OF TEST PER AXIS: 3 hours
Power	KEYBOARD: 50mA@5V (from Keyboard port) HULAPOINT POINTER: 35mA@5V (from Mouse port) USB: 85mA@5V (from CPU port)
Flammability	PRINTED CIRCUIT BOARD: 94 VO SILICONE OVERLAY: 94 HB INTERFACE CABLE: 94 VO
Compatibility	PS/2 KEYBOARD/HULAPOINT: All Windows Operating Systems USB KEYBOARD/HULAPOINT: All Windows and Macintosh OS
Temperature Range	STORAGE: -40C to +70C (-40F to +158F) OPERATING: -20C to +60C (-4F to +140F)
Weight	6.75 lbs +/- 0.10 lbs (3.06 kg +/- 0.05 kg)
Warranty	1 year limited warranty
Humidity	100%
Dimensions	20.25" x 7.88" x 1.80" (w-h-d) 514.4mm x 200.2mm x 45.7mm
Model Numbers	

Features and Benefits

- 10-Key Numeric Pad
- 24 Function Keys
- Integrated HulaPoint II Pointing Device
- Optional Mounting Holes Available
- USB, PS/2 and AT/serial configurations available