

PCM-3618

PCM-3641

PCM-3660

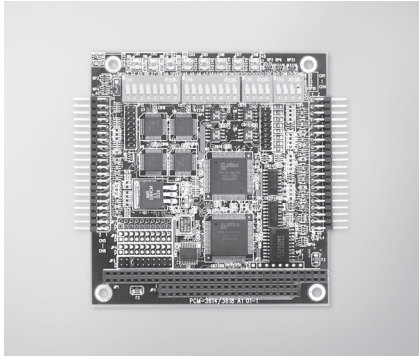


www.coastipc.com | 866-412-6278 | info@coastipc.com

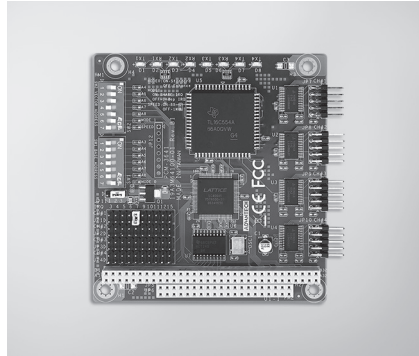
8-port RS-422/485 High-speed PC/104 Module

4-port RS-232 High-speed PC/104 Module

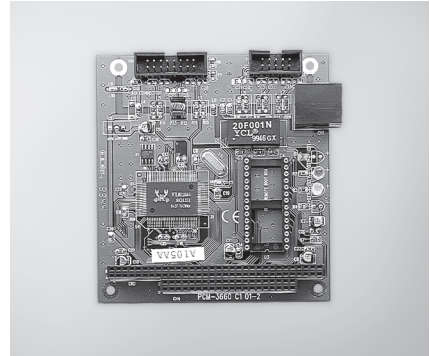
Jumperless Ethernet PC/104 Module



PCM-3618



PCM-3641



PCM-3660



Features

- Automatic RS-485 data flow control
- Shared IRQ settings for each ports
- LED indicators: TX, RX
- Supports Windows 2000/XP/Vista/7
- Supports WinCE 5.0/6.0
- Powerful and easy-to-use utility (ICOM Tools)

Specifications

General

- Card Interface** PC/104
- Certification** CE, FCC
- Connectors** 8 x DB9-M
- Ports** 8
- Power Consumption** +5V @ 650 mA

Communications

- Data Bits** 5, 6, 7, 8
- I/O Address Range** 0 x 000 ~ 0 x 3F8
- IRQ** 3, 4, 5, 6, 7, 9, 10, 11, 12, 15
- Parity** None, Even, or Odd
- Data Signals** RS-422: TxD+, TxD-, RxD+, RxD-, CTS+, CTS-, RTS+, and RTS-
RS-485: DATA+, DATA-
50 bps ~ 921.6 kbps
- Speed** 1, 1.5, 2
- Stop Bits** 1, 1.5, 2
- Termination Resistor** 120 Ω

Environment

- Operating Humidity** 0 ~ 90 % RH
- Operating Temperature** 0 ~ 65°C (32 ~ 149°F)
- Storage Temperature** -25 ~ 80°C (-13 ~ 176°F)

Ordering Information

- PCM-3618-AE** 8-port RS-422/485 High-Speed Module

Features

- Transmission speeds up to 230.4 kbps
- Shared IRQ settings for each of 4 RS-232 ports
- Standard PC ports: COM1, COM2, COM3, COM4 compatible
- Supports Windows 2000/XP/Vista/7
- Supports WinCE 5.0/6.0
- Powerful and easy-to-use utility (ICOM Tools)

Specifications

General

- Card Interface** PC/104
- Certification** CE, FCC
- Connectors** 4 x DB9-M
- Ports** 4
- Power Consumption** +5V @ 200 mA (Typical)
+5V @ 250 mA (Max)

Communications

- Data Bits** 5, 6, 7, 8
- Data Signals** RS-232: TxD, RxD, RTS, CTS, DTR, DSR, DCD, RI
0 x 0200 ~ 0 x 03F8
- I/O Address Range** 3, 4, 5, 6, 7, 9, 10, 11, 12, 15
- IRQ** 3, 4, 5, 6, 7, 9, 10, 11, 12, 15
- Parity** None, Even, or Odd
- Speed** 50 bps ~ 230.4 kbps
- Stop Bits** 1, 1.5, 2

Environment

- Operating Humidity** 0 ~ 90 % RH
- Operating Temperature** 0 ~ 65°C (32 ~ 149°F)
- Storage Temperature** -25 ~ 80°C (-13 ~ 176°F)

Ordering Information

- PCM-3641** 4-port RS-232 High-speed Module

Features

- Automatically detects 8-bit or 16-bit
- AUI connector supports external MAUs
- Onboard 32 KB buffer for multi-packages

Specifications

General

- Boot ROM Address** C0000, C8000, D0000, or D8000H
- Card Interface** PC/104
- Certification** CE, FCC
- Connectors** 1 x PC/104 stackthrough
1 x 10Base-T (RJ-45)
1 x 16-pin insulation displacement connector for AUI
- Power Consumption** +5V @ 400 mA max

Communications

- Data Bus** 8-bit, 16-bit, or auto-sending
- I/O Address** 200, 220, 240, 260, 280, 2A0, 2C0, 300, 320, 340, 380, 3A0
- IRQ** 3,4,5,9, 10, 11, 12 or 15
- Standard** IEEE 802.3 10 Mbps CSMA/CD 10Base-T Transceiver

Environment

- Operating Humidity** 10 ~ 90% RH
- Operating Temperature** 0 ~ 70°C (32 ~ 158°F)
- Storage Temperature** -15 ~ 80°C (5 ~ 176°F)

Ordering Information

- PCM-3660-CE** Jumperless Ethernet Module